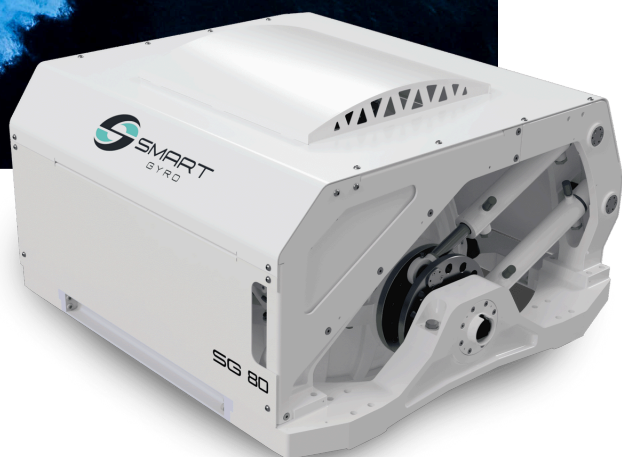




## ATLANTICA 84

*Cantieri di Baia*



Video

1x **SG 80**



## **BAIA ATLANTICA & SMARTGYRO: THE PERFECT BALANCE OF ICONIC LUXURY AND STABILITY**

Nov 14, 2024

### **Introduction**

Cantieri di Baia's renewed Atlantica model is an iconic luxury sports boat that marks an enthusiastic return after years of absence from the yachting scene. This extraordinary vessel combines breathtaking speed with timeless design and provides exceptional comfort on board. The advanced gyroscopic stabilization technology from Smartgyro was a strategic choice to ensure a unique and uncompromised navigation experience.

### **About**

The Atlantica is a CE-certified vessel with a hull under 24 meters, an overall length of 84 feet, and a trial weight of 53 tons. It boasts a cruising speed of 48 knots with excellent manoeuvrability and seaworthiness. The propulsion system consists of Arneson ASD15 surface drives with Rolla propellers, powered by MTU 2600 hp engines, two 24kw generators, and a Smartgyro SG80 stabilizer.

The boat is well-suited for luxury high speed cruising in both Mediterranean and American waters. Sea lovers will enjoy the thrill of the craft's 52 knots top speed, without compromising on onboard comfort, elegance, or the generous space available.

### **The Challenge**

Cantieri di Baia faced a crucial challenge: ensuring exceptional comfort aboard a spacious and well-designed vessel while offering all guests a unique and enjoyable experience. It was essential to combine ultimate comfort for both crew and passengers with impressive speeds and optimal manoeuvrability, allowing everyone to fully enjoy their time on the water.

To achieve this ambitious goal, Cantieri di Baia recognized the importance of



integrating an advanced gyroscopic stabilization system. Therefore, the company chose to collaborate closely with Smartgyro, selected as a partner to provide a highly effective and reliable stabilization solution, ensuring uncompromised comfort and safety on board in varying sea conditions.

### The Solution

Cantieri di Baia worked closely with Smartgyro during the development of the Atlantica 84, to carry out a flawless installation of the SG80 through meticulous planning of the lamination and both 3D and 2D machinery layouts of the Atlantica. Smartgyro's modular mechanical design facilitated a quick and efficient installation without compromising space and aesthetics.

The installation process was smooth, fast, and efficient without any issues. Each step of the engineering process was carefully executed and Smartgyro was consistently available for consultation, providing support and information at various points along the process.

Once all the engineering checks were completed during the design phase, the onboard installation of the SG80 was extremely straightforward. The teams worked collaboratively to ensure the desired results were fully achieved according to high standards.

*"Smartgyro's support during the installation process made all the difference. Their units are easy to maintain and have demonstrated outstanding performance. We are completely satisfied with the exceptional stabilization solution Smartgyro provided for the Atlantica."* — Cantieri di Baia Technical Team.

## Stay updated with the Latest from Smartgyro

[Check our Latest News](#)

